

UNIVERSITY OF GREENWICH

INTERNATIONAL SCIENTIFIC CONFERENCE
**THE FORMATION OF A MODERN COMPETITIVE
ENVIRONMENT: INTEGRATION
AND GLOBALIZATION**

May 25, 2018

Proceedings of the Conference

Part I

**Greenwich
2018**

Пропонується також впорядкувати в повній мірі визначені відносини у сфері користування надр та інших природних ресурсів, що знаходяться на прилеглих територіях до сільських громад. Це дозволить громадам більш раціонально та ефективно використовувати природні багатства та рекреаційний потенціал своїх територій.

В нашій країні досить розповсюджені випадки, коли фактична та юридична адреси підприємства не збігаються, що веде за собою використання землі, інфраструктури, трудових ресурсів без наповнення місцевих бюджетів. Доцільно впровадити на законодавчому рівні механізм визначених відрахувань до відповідних бюджетів.

Отже, запропоновані заходи майже повністю вирішуються шляхом змін у податковому та бюджетному законодавстві України.

Література:

1. Податковий кодекс України. № 2756-VI від 02.12.2012 р. зі змінами та доповненнями.
2. Закон України «Про місцеве самоврядування в Україні». № 280/97-ВР від 21.05.1997 р.
3. Закон України «Про внесення змін до Бюджетного кодексу України щодо реформи міжбюджетних відносин. № 79-VIII від 28.12.2014 р.

**Zavora T.M., Candidate of Economic Sciences,
Associate Professor,
Poltava National Technical Yuri Kondratyuk University
Poltava, Ukraine**

MODELING THE INFLUENCE OF HOUSING POLICY ON REGION SOCIO-ECONOMIC SECURITY

The process of defining and implementing regional policy measures does not always meet society needs. The main reasons for this are the insufficient scientific substantiation of the identified measures; low awareness level of authorities and the public on the social programs implementation; improper level of personal responsibility of all business entities. In view of this, the scientific substantiation of social policy development implementation by means of modeling the influence of its components on region socio-economic security is being updated in order to increase the level and quality of population life. Formation and practical mechanism realization of providing region social and economic security require social policy effectiveness analyses [1]. Housing policy plays an important role in this process. Providing people with housing and creating secure living conditions request cautious housing policies forming and realization.

The most important threats to region socio-economic security remain the population poverty, which is characterized by inability due to lack of funds to maintain a high living standard, receive high-quality health care services, educational services, and have sanitary norms and living conditions determined at legislation

level. The new risks appearance and existing problems exacerbation in the process of housing policy implementation requires scientific decisions substantiation, understanding and acceptance their importance realization by society.

Under scientific-research work at Poltava National Technical Yuri Kondratyuk University, Department of finances and banking – «Methodological foundation of region social and economic security provision» (Project ID: 0118U001096) the housing policy condition in the areas of its formation and modeling its impact on region socio-economic security was analyzed. In this regard, we proposed a method for an integrated housing policy assessment, which includes seven stages (Fig. 1).

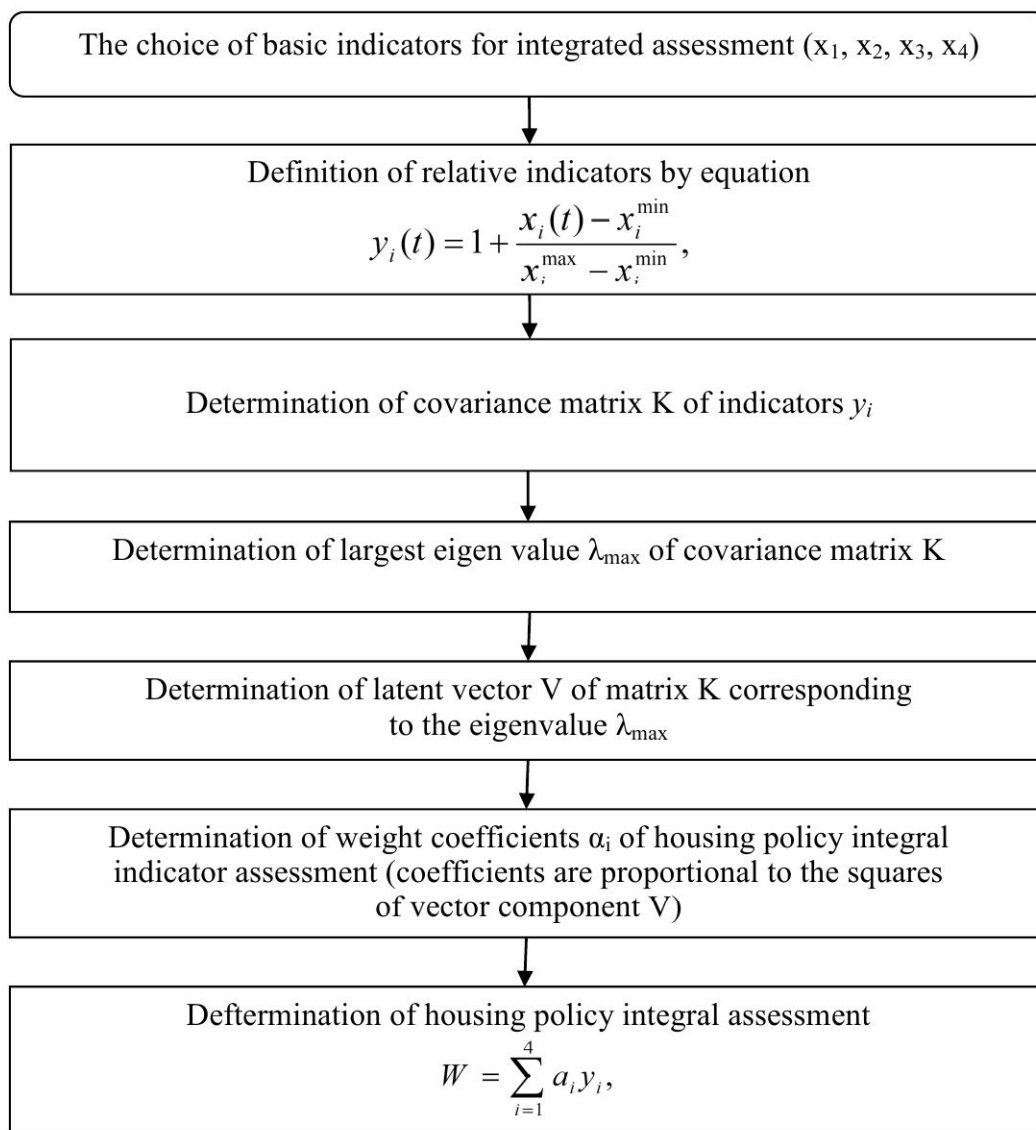


Fig. 1. Housing policy integral assessment methodology

Basic indicators for integral estimation are chosen the following ones: total area of housing accepted into service over the year, thousand of m²; housing resources in average per citizen, m²; number of apartments constructed over the year, thousand; capital investment into housing construction, thousand of hryvnias.

To combine these indicators in common integral estimation it is necessary to define the relative relevant indicators.

Relative indicators defined in such a way are within the limits from one to two.

Integral indicator for housing policies estimation on the regional level is defined from the equation (1).

$$W = \sum_{i=1}^4 \alpha_i y_i, \quad (1)$$

where α_i – indicators weighted coefficients.

These coefficients are defined by the method of modified major component, with covariance matrix of y_i indices built for it.

На наступному етапі інтегрального оцінювання стану житлової політики обчислюємо власні значення та відповідні їм власні вектори цієї матриці.

At the next stage of housing policy integrated assessment, we calculate the eigen values and corresponding latent vectors to this matrix.

Using the proposed methodological approach has revealed an increase in the housing policy integral indicator from 1.4588 in 2011 to 1.7826 in 2017. The largest value of the indicator was in 2015 – 1.9911.

To reveal specific aspects of housing policies influence on the region social and economic security we defined the correlation connectivity between the obtained housing policies integral estimation and some indices of the region social and economic development.

The analysis of indicators dependence of social and economic development with an housing policy integrated assessment was done. The indicators dependence: population expenses on purchasing goods and services, population incomes, dependence of sickness amount on housing policies integral estimation and also dependence of the population's income on the relative indicators of the housing stock on average per inhabitant and capital investment in housing construction were substantiated.

Thus modeling of housing policies influence on the region social and economic security enabled revealing the connection between housing policies integral estimation and main indices of the region social and economic development.

Thus, the consideration and skillful use of social factors in development and implementation of socio-economic strategy development can become an important source of its economic development. The leading role of social aspects in region socio-economic development is due to the priority of level and population life quality increasing.

References:

1. Завора Т.М. Комплексна система моніторингу соціальної безпеки регіону / Т.М. Завора, О.В. Чепурний // Соціально-економічні проблеми адаптації реального сектора в сучасних умовах: Матеріали I Міжнародної наук.-практ. конф. – Донецьк: Цифрова типографія, 2013. – С. 20-22.

2. Онищенко В.О. Соціальна безпека регіону: теоретичні та прикладні аспекти: монографія / В.О. Онищенко, Т.М. Завора, О.В. Чепурний. – Полтава: ПолтНТУ, 2015. – 275 с.

3. Zavora T., Chepurny O. (2014) Forming the diagnostics methods of social security condition in a region *Economics & Sociology*, Vol. 7., № 1, (2014), pp. 228-248.