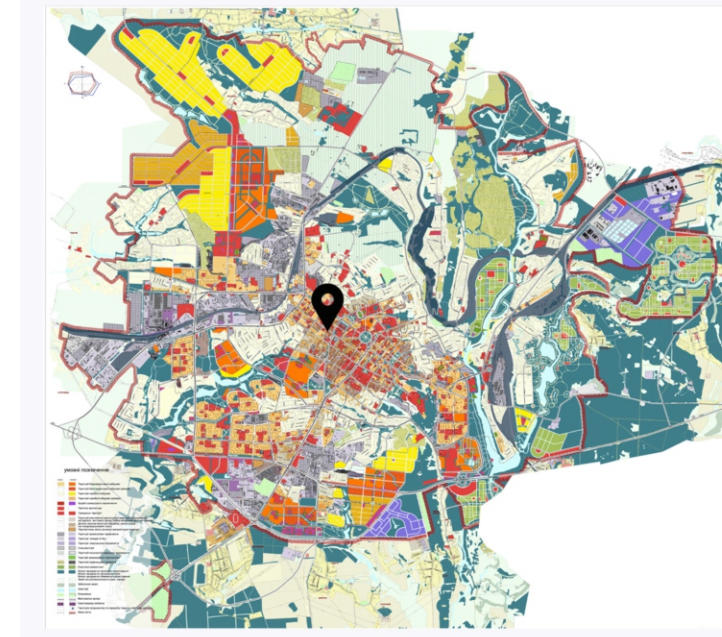
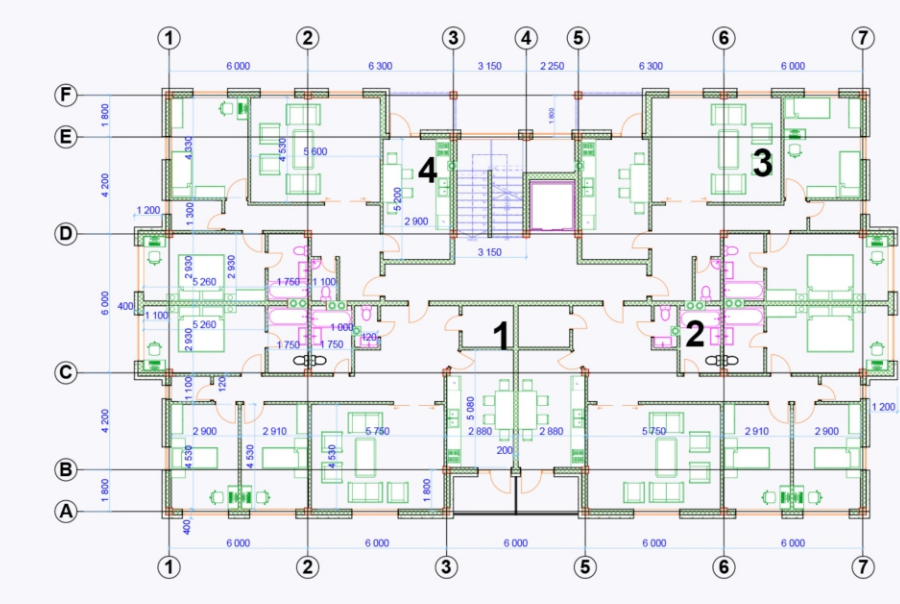




## MULTI-STOREY RESIDENTIAL BUILDINGS IN POLTAVA

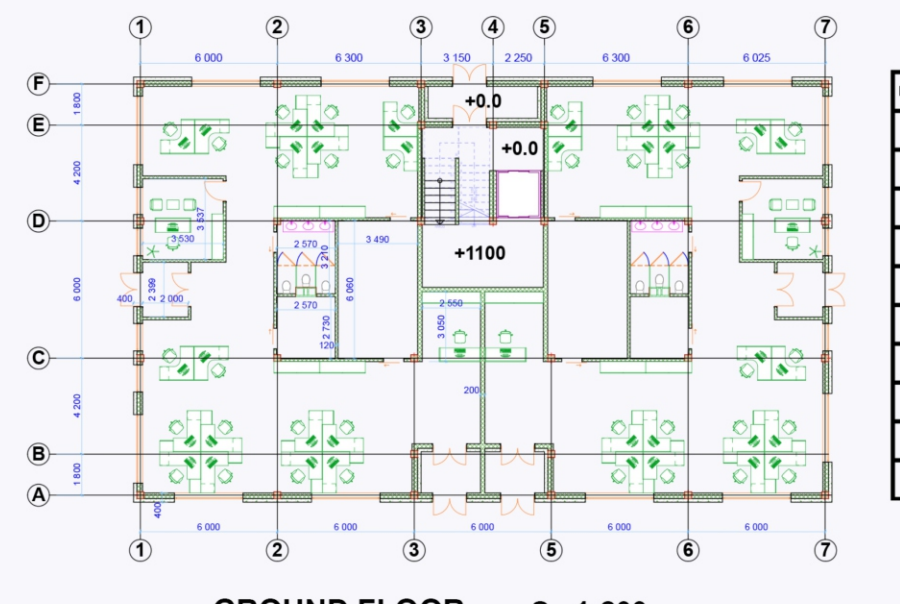


The land of project



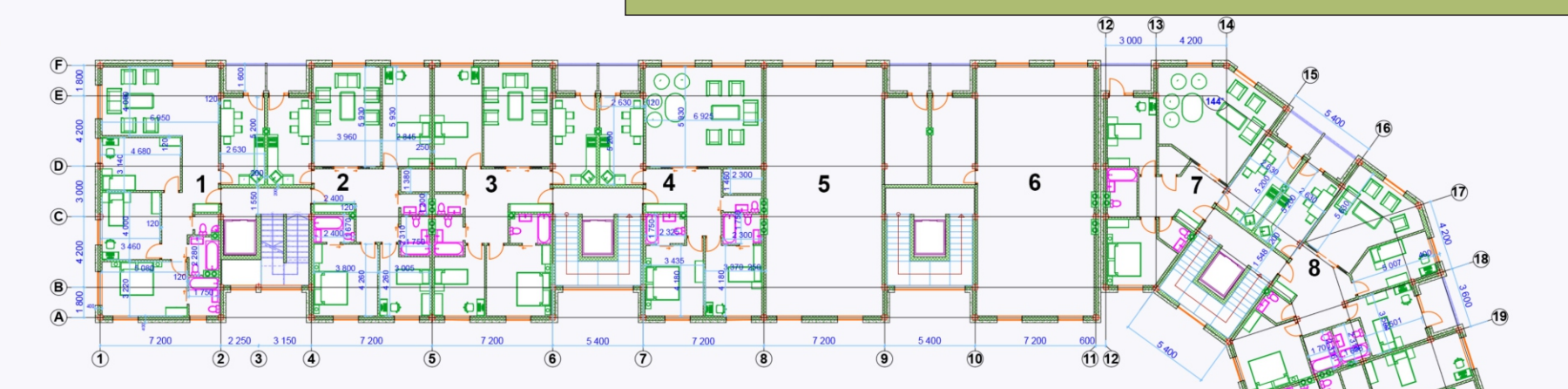
one building section with 6-floor residential has 4 room for every floor

Number of apartment	Type of apartment	Square meter
1	4 Room	142.4
2	4 Room	142.4
3	3 Room	113.58
4	3 Room	113.58

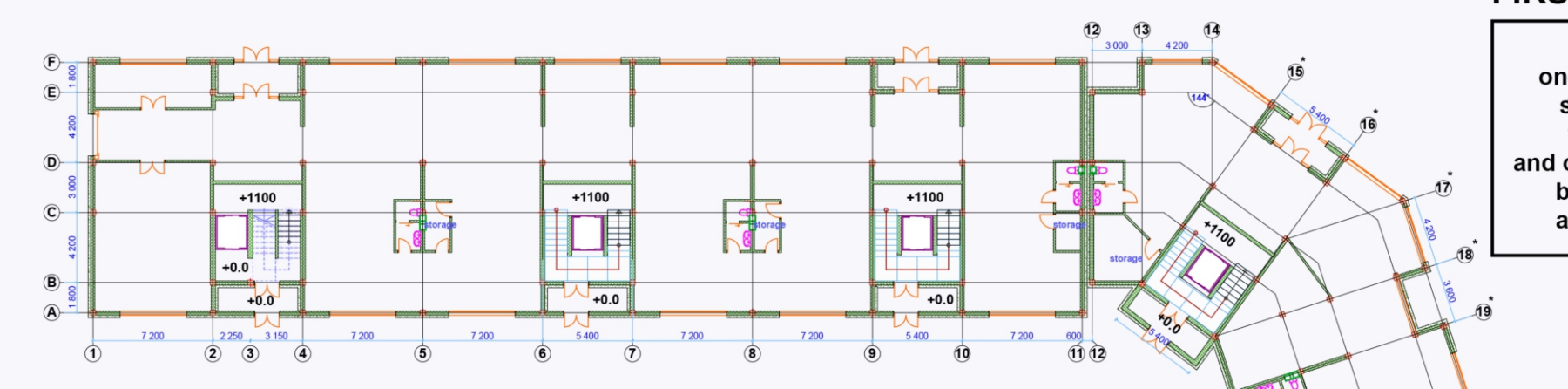


offices with 1 reception 18 and private office for director and 3 toilets and storage place and relaxing area

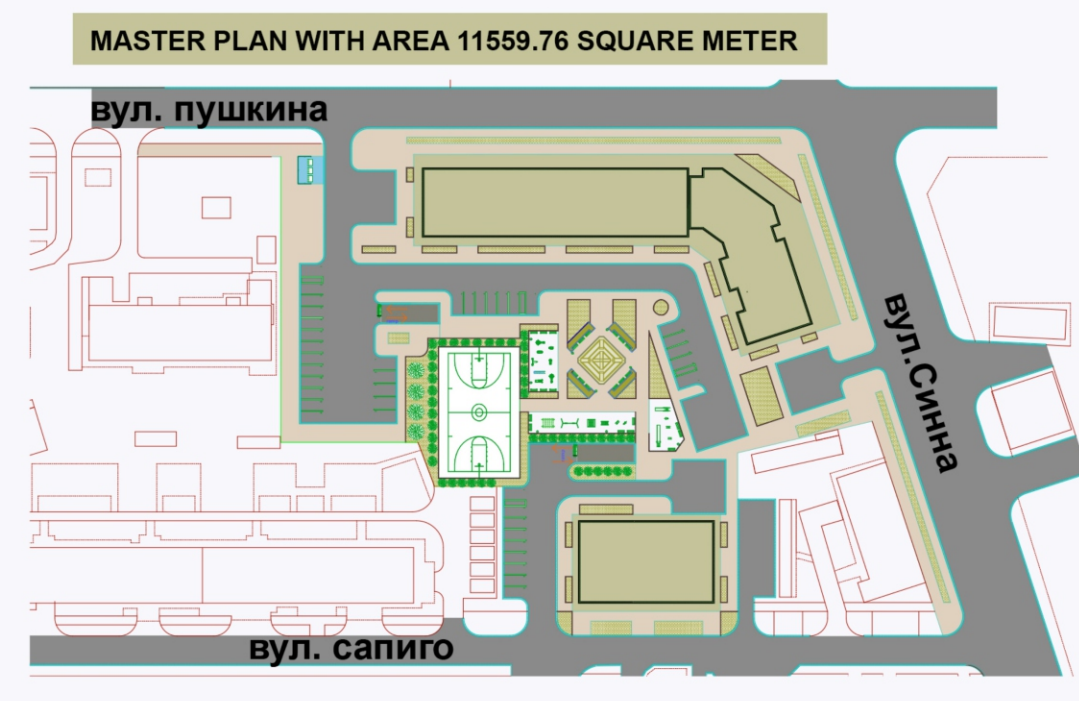
Number of apartment	Type of apartment	Square meter
1	4 Room	135.3
2	4 Room	135.3
3	4 Room	135.3
4	3 Room	121.5
5	3 Room	121.5
6	4 Room	135.3
7	3 Room	121.5
8	4 Room	135.3
9	4 Room	135.3
10	4 Room	135.3



two sections building in one complex opposite of Sina street and pushkina street with luxury design inside and outside this complex is mixed between 4 room apartment and 3 room apartment



the shopping area on the ground floor has a big space for a shop with a place for downloading with luxury design



Site Plan

